



NT Controller Kit Assembly

Kit Contents

1x NT Controller Main PCB

1x NT Controller Front Panel

16x Qingpu WQP-WQP518MA 3.5mm Eurorack TS Mono Jacks

16x Knurled Jack Nuts

16x Hakai Labs Red LEDs

1x LED Light Blocker

4x Knurlies

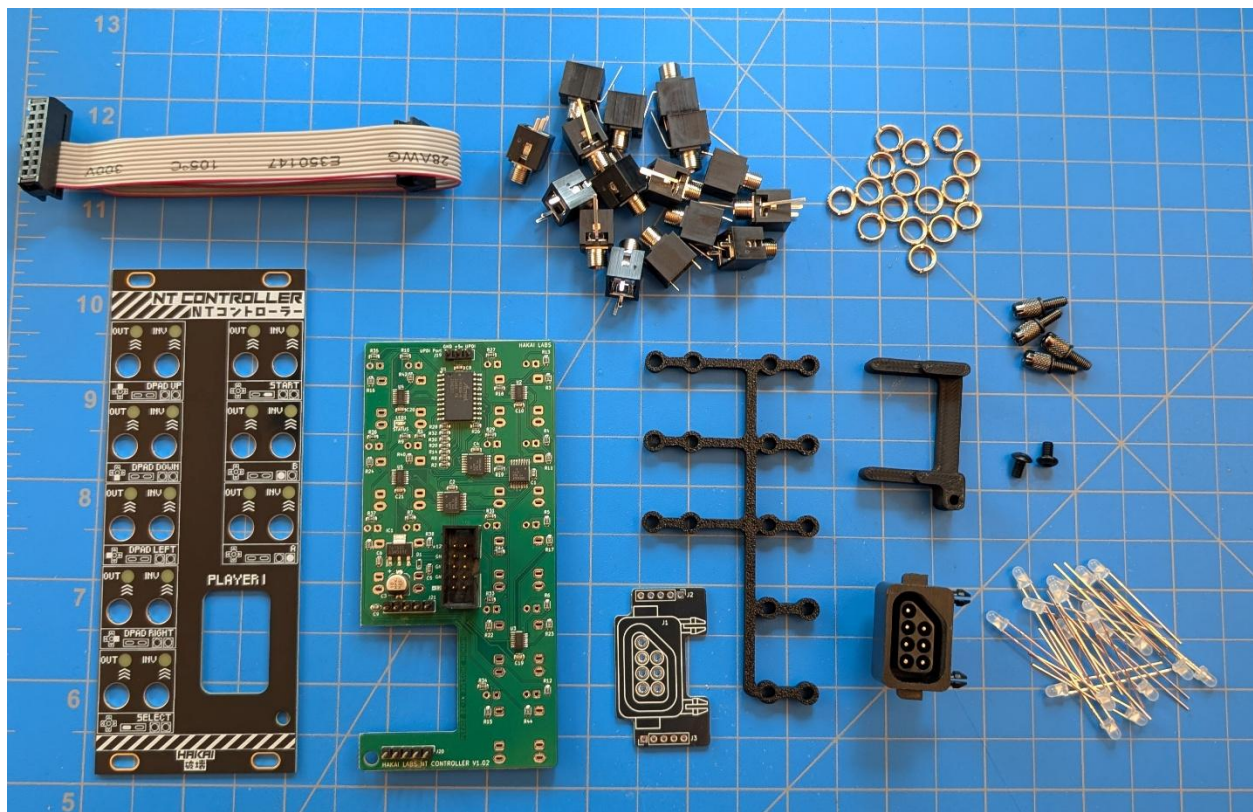
1x Hakai Labs 20cm Eurorack Power Cable

2x M3 Screws

1x Gamepad Port

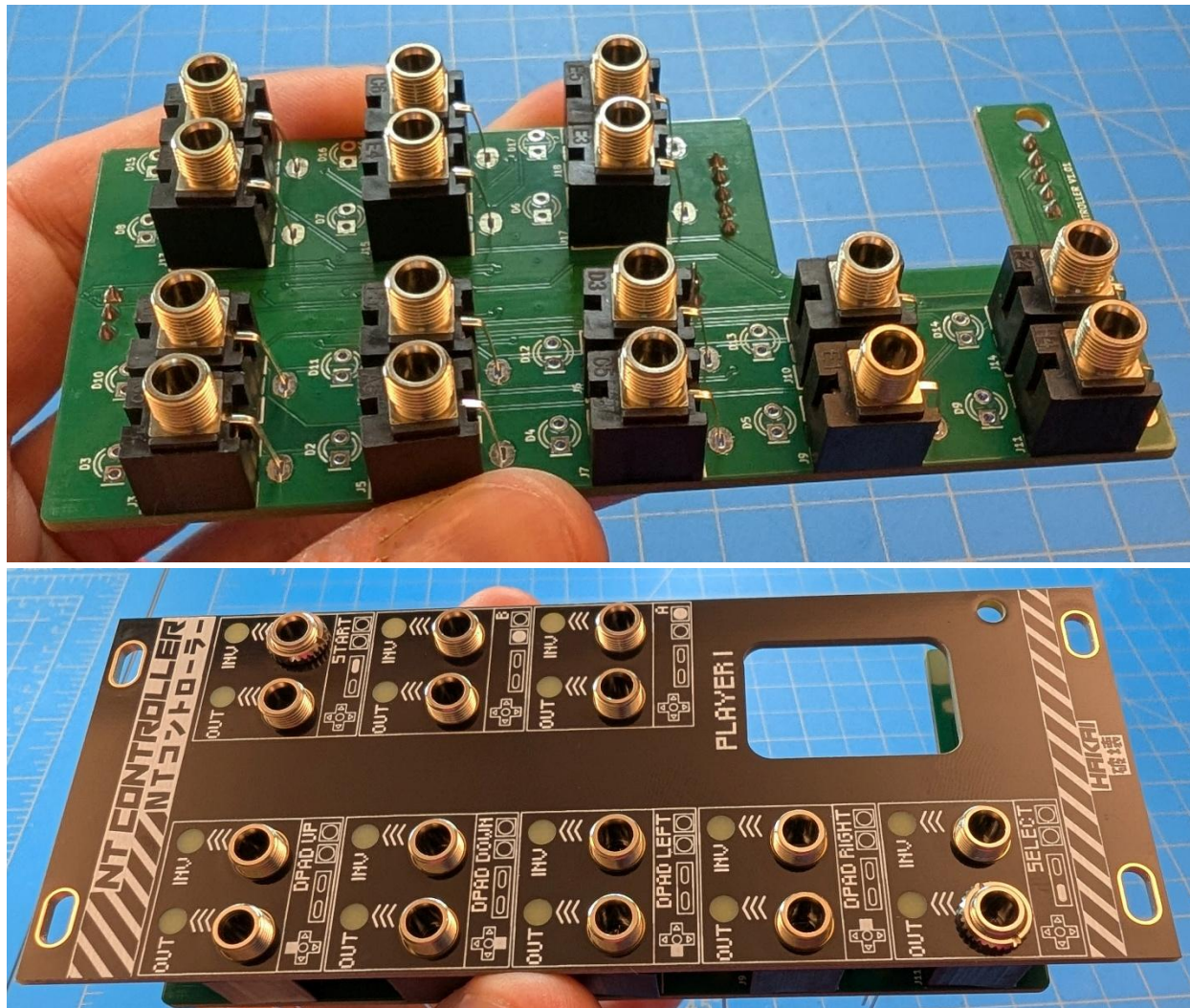
1x Gamepad Port Support Bracket

1x Gamepad PCB Interface Board



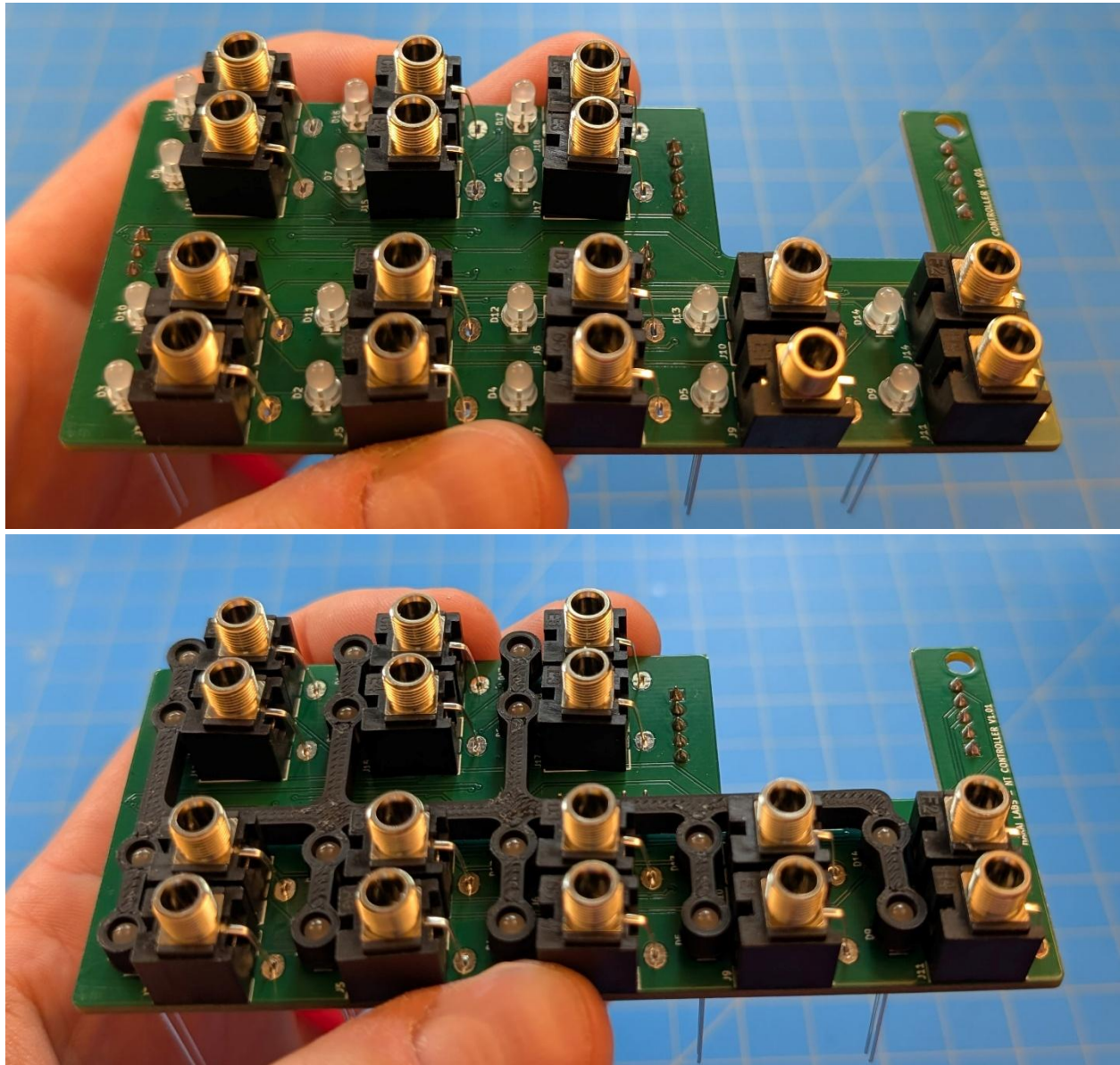
Step 1

Install the 10 WQP-WQP518MA Jacks into the main board. You can use the front panel to help ensure alignment. **Tip:** Install the front panel on the jacks using 2 of the jack nuts on the 2 furthest jacks, flip the board over and solder all jacks in place.



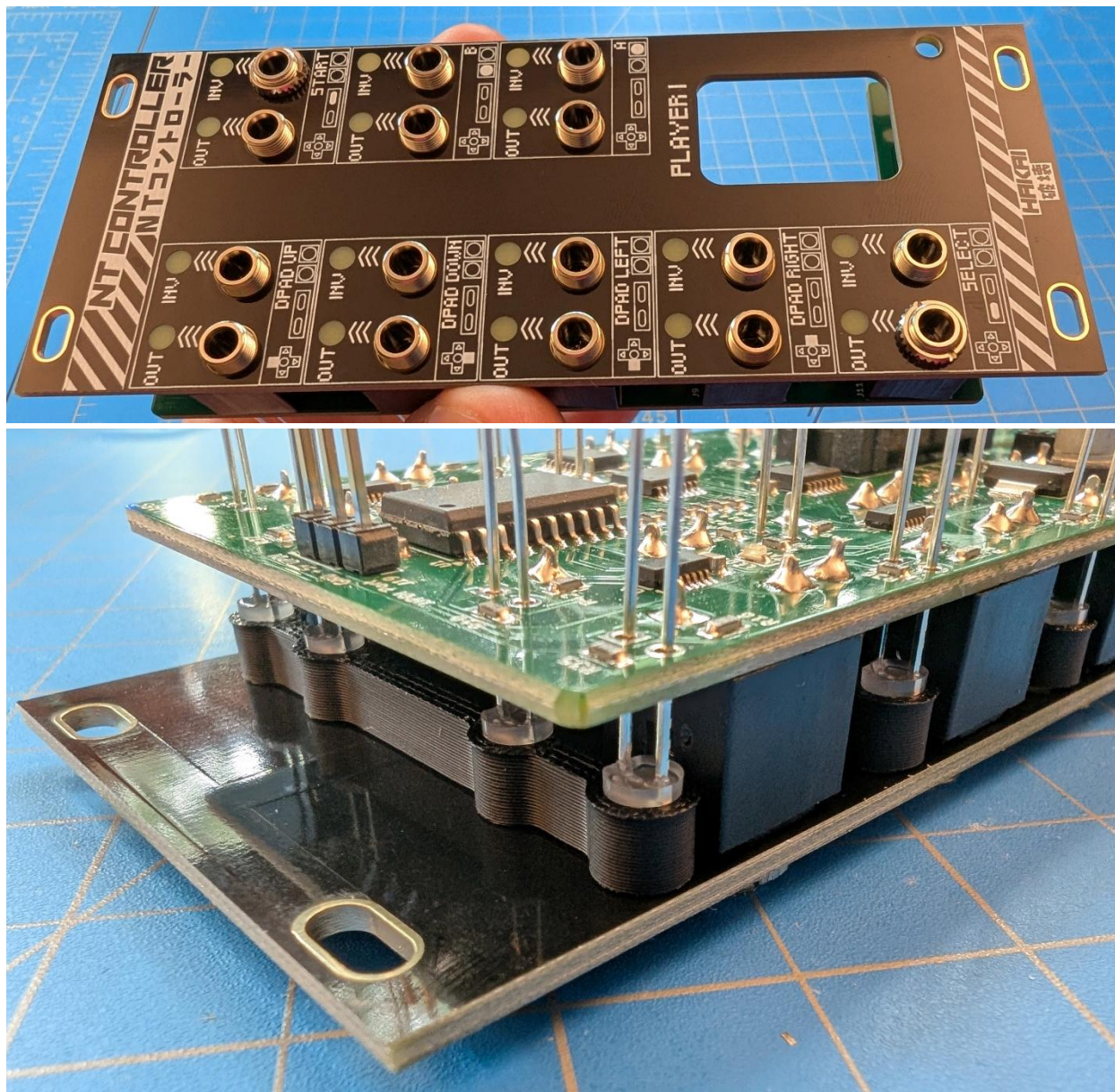
Step 2

Remove the front panel if you installed it to help with the jack alignment in Step 1. Then insert all 16 red LEDs into their proper positions and install the LED Light Blocker onto the top of the LEDs as shown below. Make sure the LED Light Blocker is pushed all the way down on the LEDs. It is of utmost importance to get these LEDs in the proper orientation, or they will not function properly. **The short lead on the LED goes toward the line on the silkscreen.**



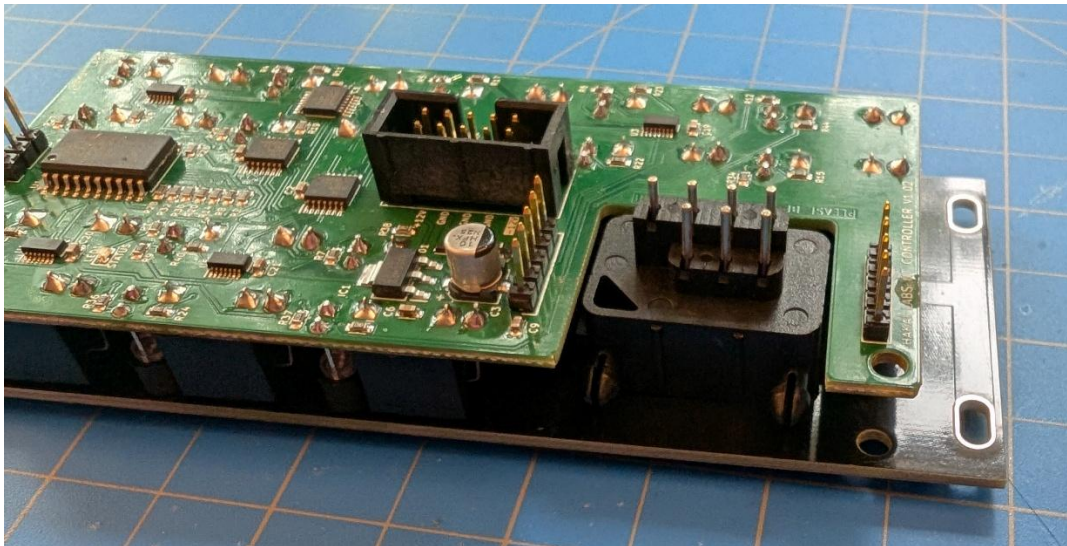
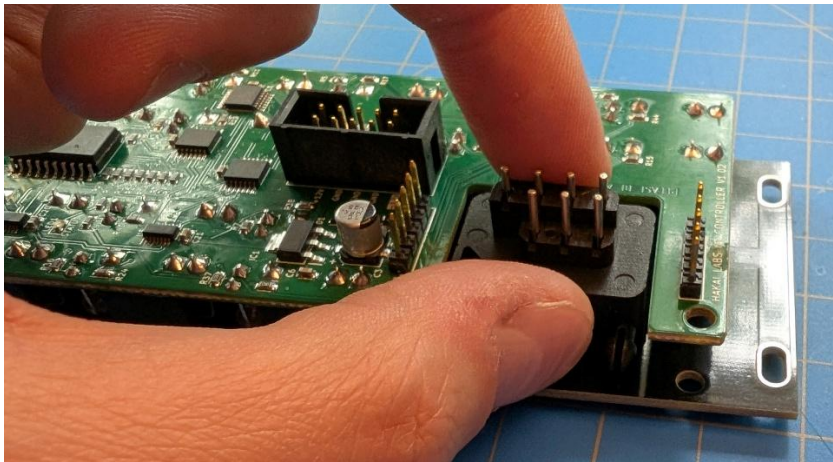
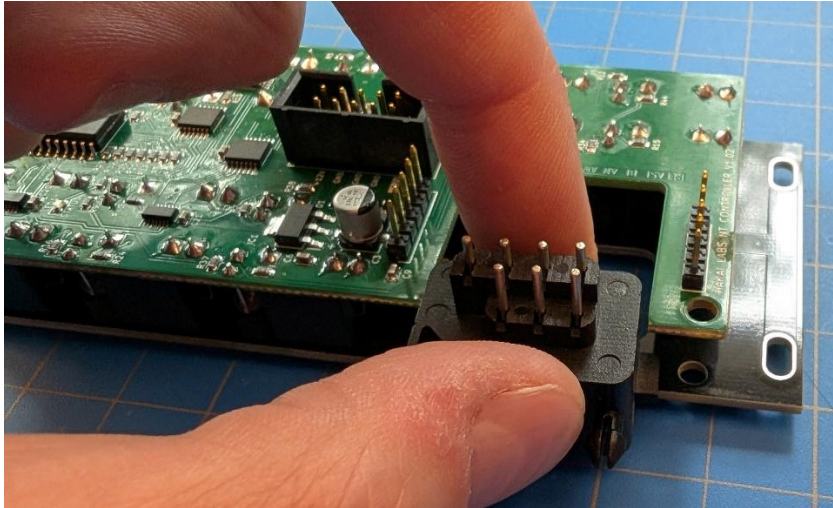
Step 3

Reinstall front panel securing it in place with 2 jack nuts in the 2 positions farthest from each other. Next flip over the assembly and set on your table making sure that the LEDs and the LED Light Blocker have moved all the way up against the Front Panel as shown. Double check that ALL LEDs are pushed all the way into the LED Light Blocker. Finally, solder all LEDs in place and trip off the leads!



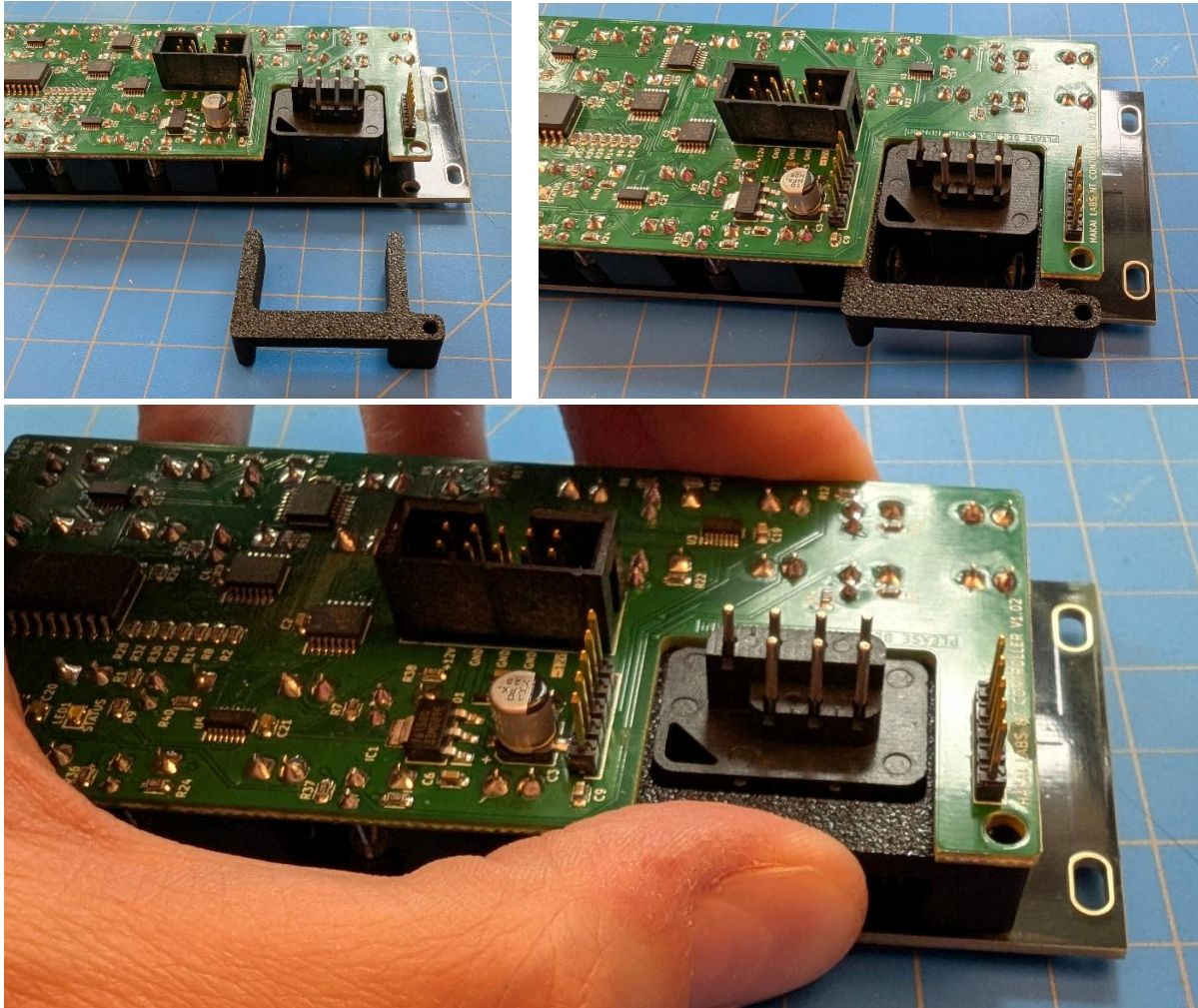
Step 4

OK, onto the fun part. Flip the assembly over on your table and slide the Gamepad Port into the assembly as shown below. The Port should now sit loosely into the front panel.



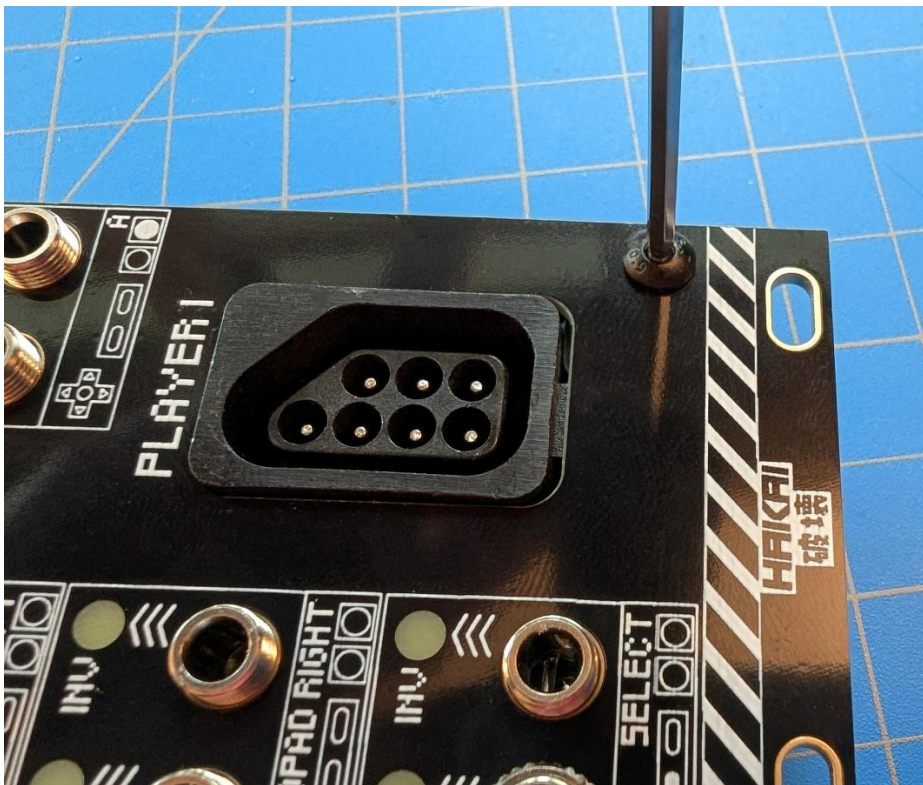
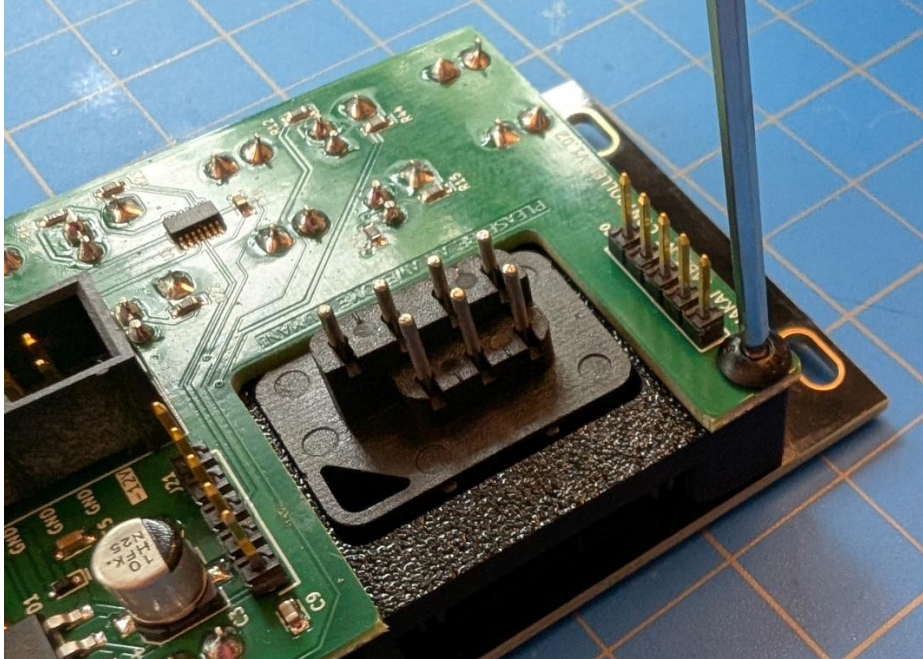
Step 5

Slip the Gamepad Port Bracket into the assembly as shown below. Keep the rough side of the bracket up against the green main PCB. Once fully inserted, the holes in the PCB should align.



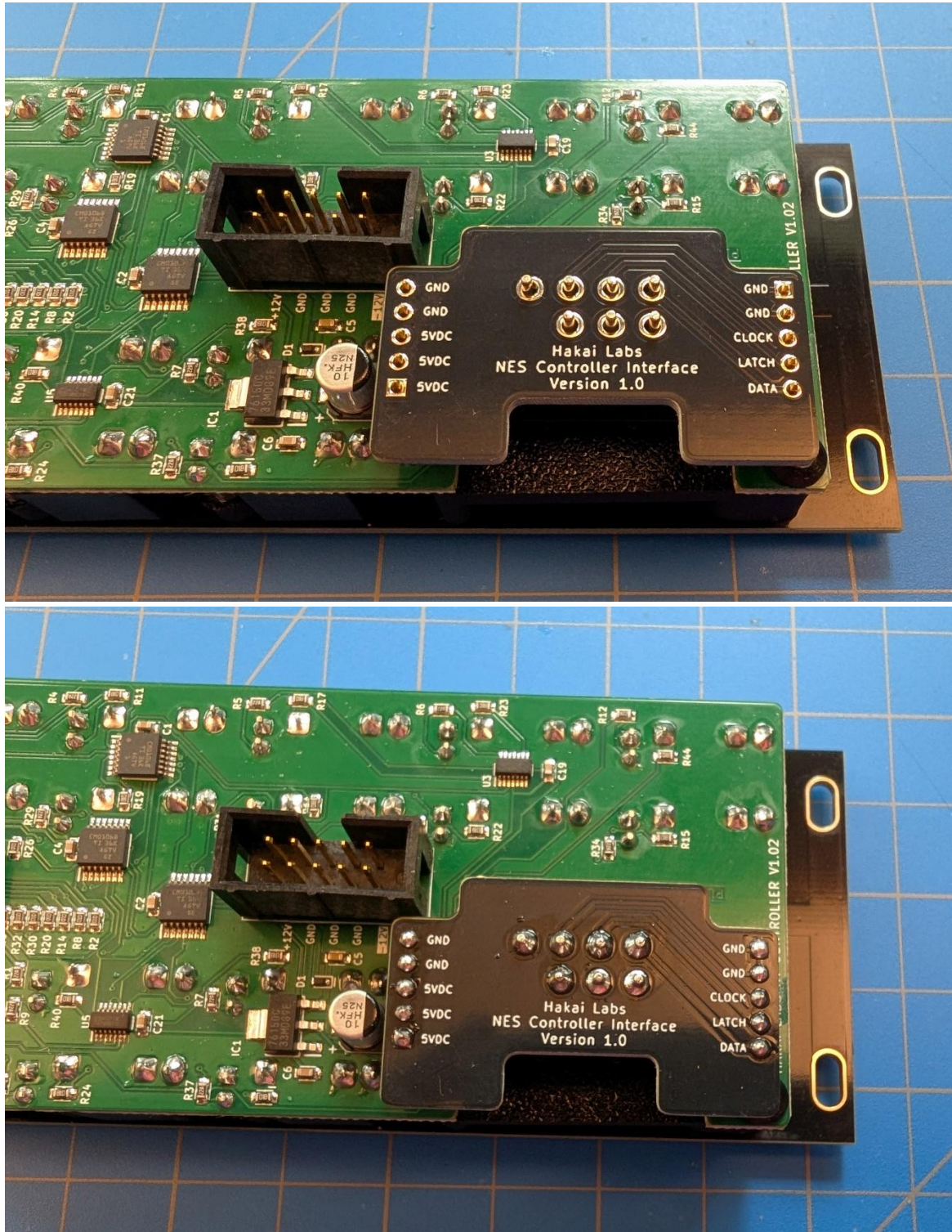
Step 6

Using a 2mm Allen key, install the M3 screw in the bottom of the assembly securing the main PCB to the Gamepad Bracket. Then install the other M3 screw into the front of the assembly securing the Front Panel to the Gamepad Bracket.



Step 7

Flip the assembly back on its face and install/solder the Gamepad PCB Interface Board onto the back of the Gamepad Port securing it electrically and mechanically to the rest of the assembly as shown below.



Step 8

Install and secure the remaining jack nuts to the front panel jacks. That is it! You are done!

Now go plug in your old game controllers, test them out and enjoy your new module!

